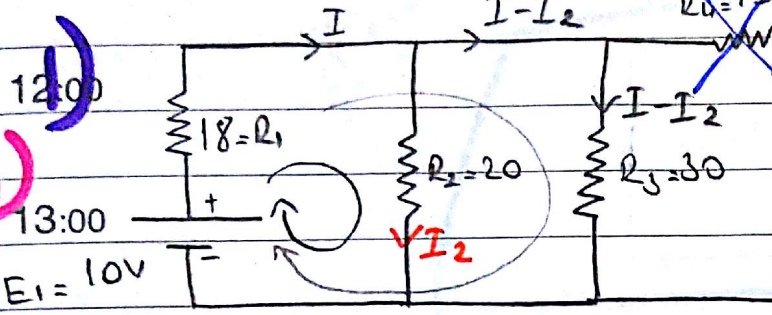


11:00



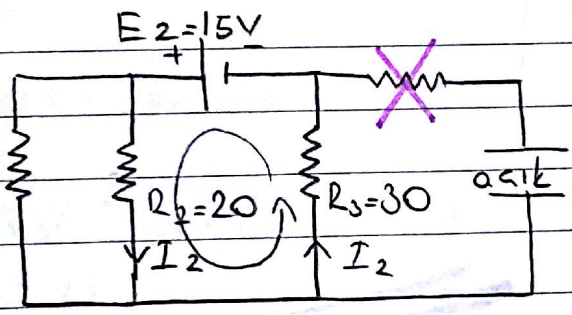
$$\begin{aligned} 3/18I + 20I_2 &= 10 \\ 2/48I - 30I_2 &= 10 \end{aligned}$$

$$\begin{aligned} 54I + 86I_2 &= 50 & I &= 0,333 \text{ A} \\ \Rightarrow I_2 &= 0,2 \text{ A} & E_1 & \text{ için} \end{aligned}$$

14:00

$$18I + 30I - 30I_2 = 10$$

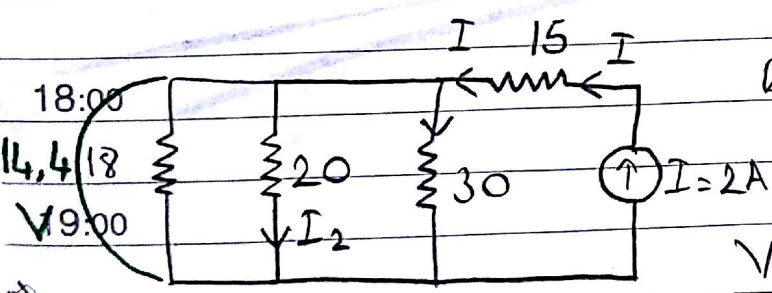
15:00



$$15 = 20I_2 + 30I_2$$

$$I_2 = 0,3 \text{ A } E_2 \text{ için}$$

17:00



$$\begin{aligned} R_{es} &= 7,2 \\ R &= 7,2 \\ V_2 &= 7,2 \cdot 2 = 14,4 \text{ V} \end{aligned}$$

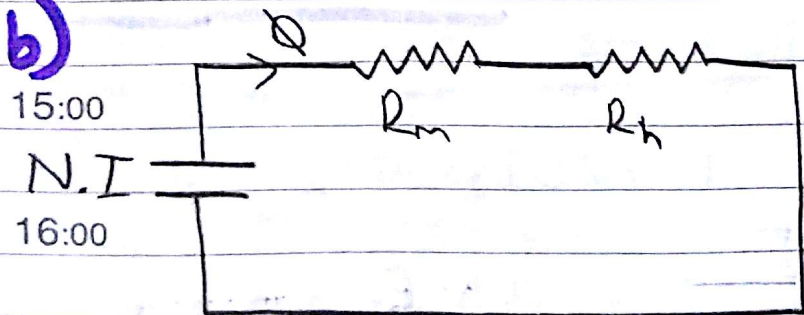
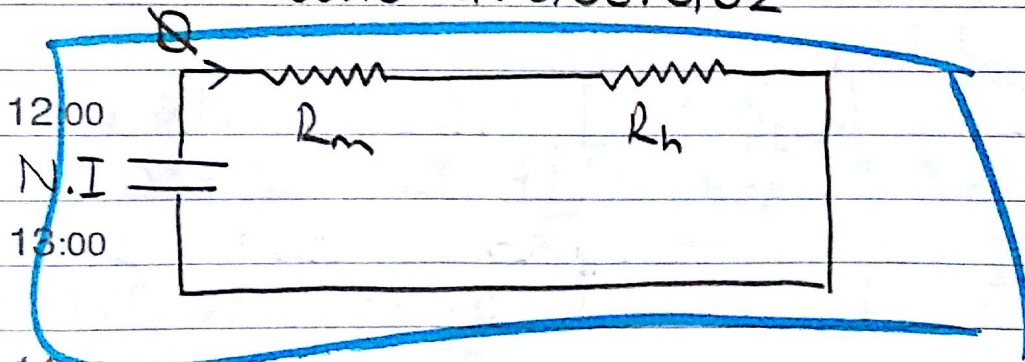
$$I_2 = \frac{V}{R} = \frac{14,4}{20} = \underline{0,72 \text{ A}}$$

 Toplam $I_2 = 0,2 + 0,3 + 0,72 = \underline{1,22 \text{ A}}$

08:00 **b)**

09:00 **a)** $R_m = \frac{0,56}{4\pi \cdot 10^{-7} \cdot 250 \cdot 0,03 \cdot 0,02} = 2370881,69 \Omega$

10:00 **b)** $R_h = \frac{0,04}{4\pi \cdot 10^{-7} \cdot 1 \cdot 0,03 \cdot 0,02} = 53051647,76 \Omega$

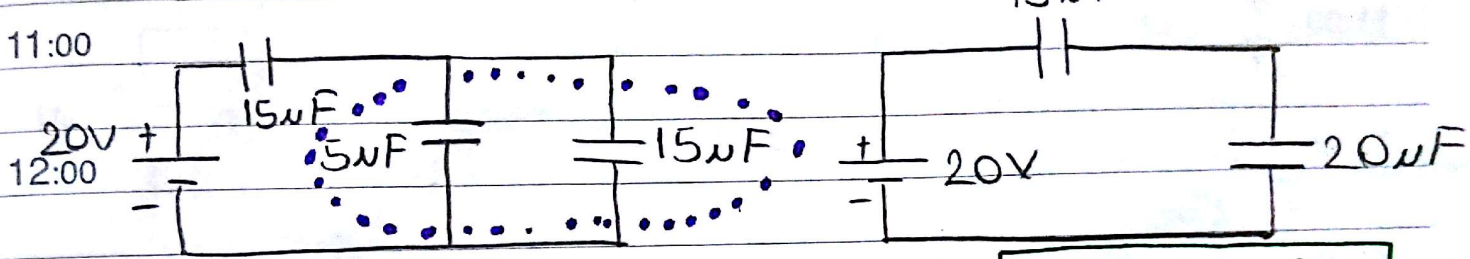
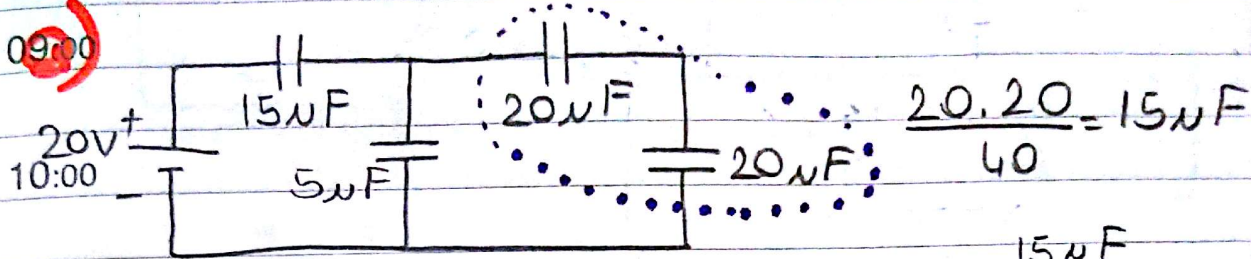


$7500 = \Phi \cdot 56022533,45$

$\Phi = 0,134 \times 10^{-3} \text{ Wb}$
(Weber)

18:00

08:00 $C = \frac{Q}{V}$ (farad = coulomb / volt)



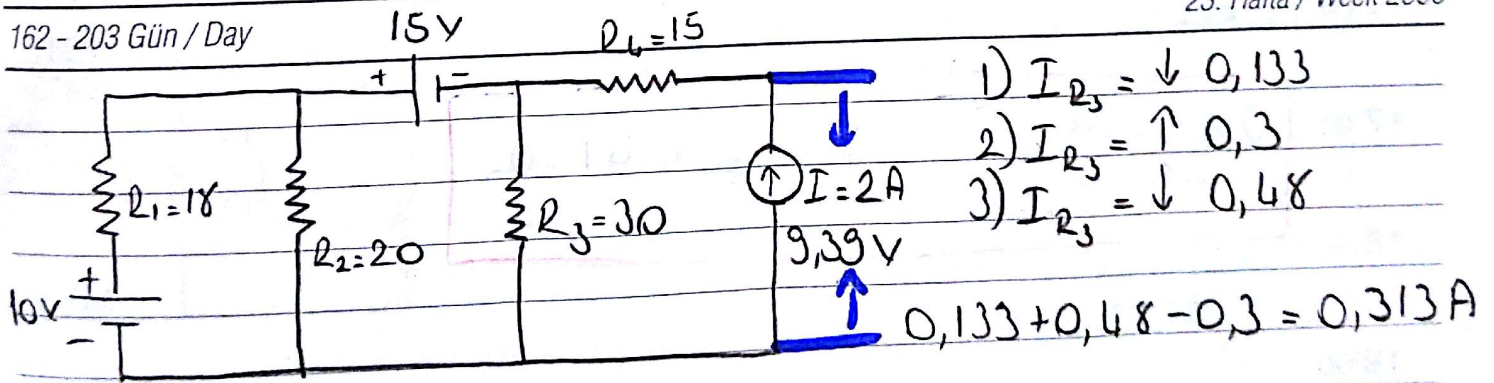
13:00 $\frac{20 \cdot 15}{35} = 8,57 \mu F = C_{es}$

| | | | | | | |
|----|-----|----|----|-----|-----|-----|
| Pr | Sa | Ca | Pe | Cu | Ct | Pz |
| Mo | Tue | We | Th | Fri | Sat | Sun |
| 10 | 11 | 12 | 13 | 14 | 15 | 16 |
| 17 | 18 | 19 | 20 | 21 | 22 | 23 |
| 24 | 25 | 26 | 27 | 28 | 29 | 30 |
| 31 | | | | | | |

HAZİRAN
June
Juin
June
ИЮНЬ

Pazar
Sunday
Dimanche
Sonntag
ВОСКРЕСЕНЬЕ

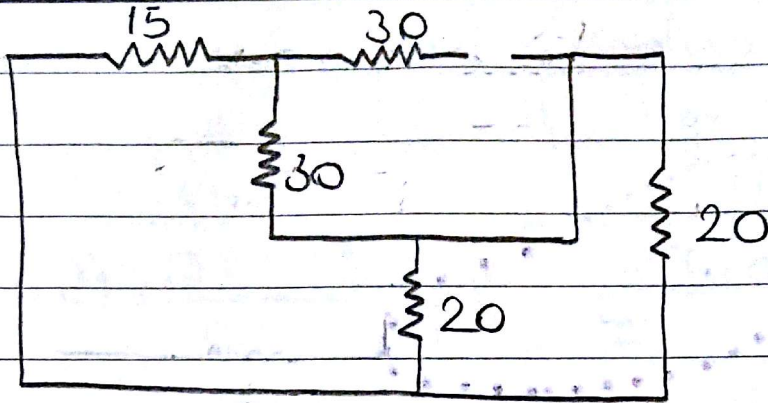
11



$V_{R_3} = 30 \cdot 0,313 = 9,39 V$

$P = I \cdot V = 18,78 W$

08:40



09:00

10:00

11:00

12:00

13:00

$$14:00 \quad 2/35 I_1 - 10 I_N = 70$$

$$20 I_N - 15 I_1 = 0$$

15:00

$$55 I_1 = 140 \quad I_1 = 2,55 \text{ A} \Rightarrow I_N = -0,78 \text{ A}$$

16:00

$$17:00 \quad R_L = \frac{V_{Th}}{I_N} = \frac{-5}{-0,78} = 6,41 \Omega$$

18:00